

# Information to create print data

Some helpful informations to create print data for large format digital prints



Create your data in a common layout software



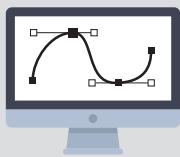
Make sure to place text or images with enough distance to the edge



Color space for graphics and typesetting: CMYK



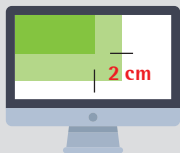
Color space for images and photos: CMYK or RGB



Please use vector graphics wherever possible



Resolution for images and photos: 50 – 90 DPI (final size)



Include an all around bleed of 1%, at least 2 cm at formats up to 200 cm



Scale: 1 to 1  
Documents larger 500 cm scale: 1 to 10



Please note the final size within the filename: e.g. »Print\_450x350.pdf«



Export your Print files as PDF/X-4

For further information or if you have any questions, do not hesitate to contact us.